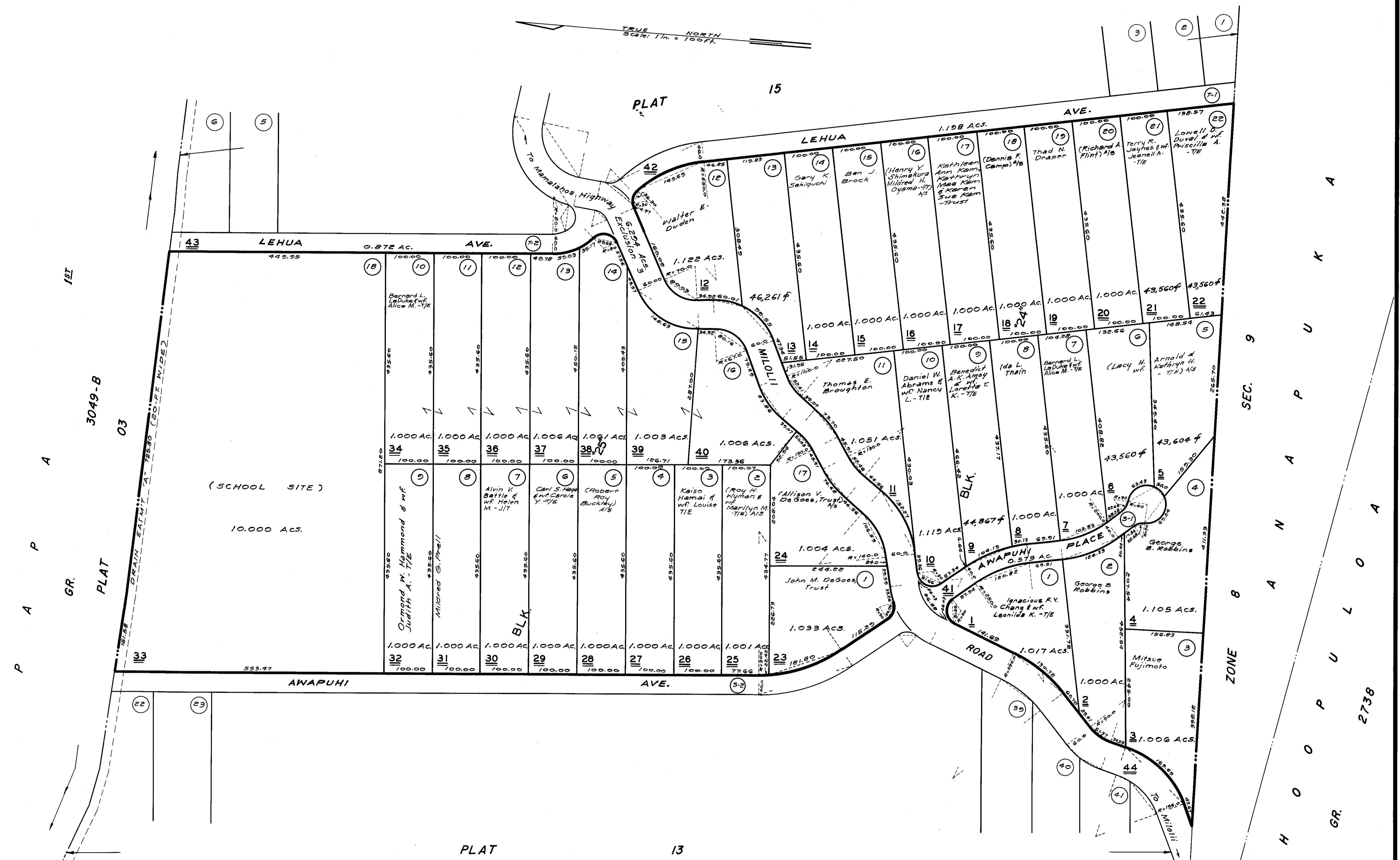


DEC 19 1961
JUN 2 1962
JUL 2 1962
JUL 3 1962
JUN 2 1962

DWG. NO.: 5312
SOURCE: F. P. 789
BY: J.Y.L.N./A.S./L.S. DATE: June 20, 1962



PAPA 2ND, GR. 3723, SOUTH KONA, HAWAII, MILOLII BEACH LOTS SUB'D., F. P. 789 (Formerly 8-8-01-2 par.)

NOTE: Parcels 41, 42 & 43 owned by Milolii Beach Club Association.
NOTE: Parcels 18, 20, 33 owned by Great Hawaiian Financial Corporation.
NOTE: All lots owned by Norman N. Inaba d.b.a. Milolii Syndicate unless otherwise noted.

FOR REAL PROPERTY TAXATION PURPOSES
SUBJECT TO CHANGE

DEPARTMENT OF TAXATION TAXATION MAPS BUREAU STATE OF HAWAII		
TAX MAP		
THIRD TAXATION DIVISION		
ZONE	SEC.	PLAT
8	8	14
SCALE: 1 IN. = 100 FT.		